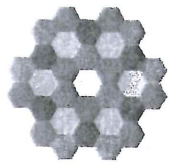
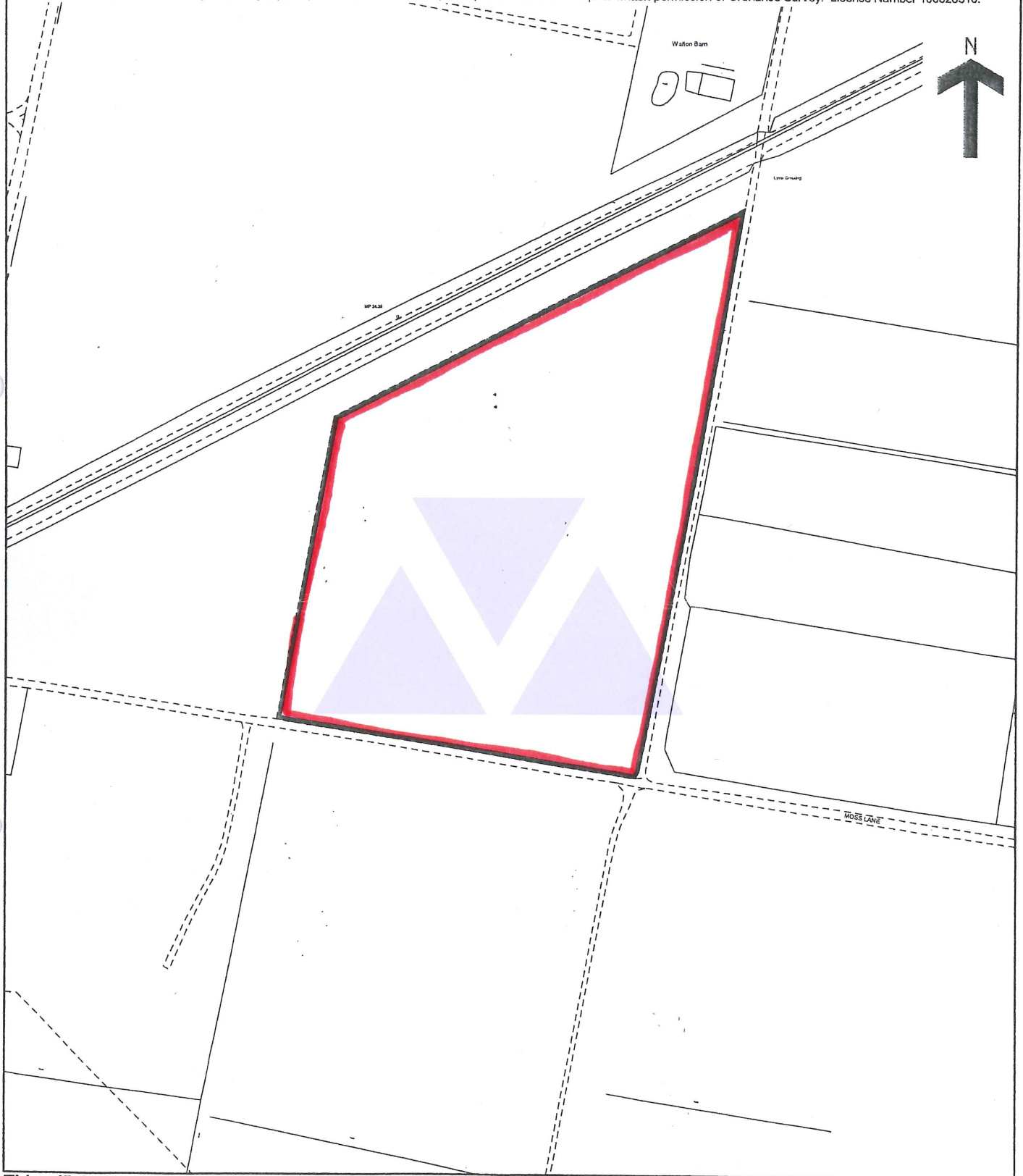


Land Registry Official copy of title plan

Title number **LAN96774**
Ordnance Survey map reference **SD5224NW**
Scale **1:2500**
Administrative area **Lancashire: South Ribble**



© Crown Copyright. Produced by Land Registry. Reproduction in whole or in part is prohibited without the prior written permission of Ordnance Survey. Licence Number 100026316.



This official copy issued on 23 December 2009 shows the state of this title plan on 23 December 2009 at 15:39:41. It is admissible in evidence to the same extent as the original (s.67 Land Registration Act 2002). This title plan shows the general position, not the exact line, of the boundaries. It may be subject to distortions in scale. Measurements scaled from this plan may not match measurements between the same points on the ground. See Land Registry Public Guide 19 - Title Plans and Boundaries. This title is dealt with by Land Registry, Fylde Office.

*NOT TO SCALE
IDENTIFICATION ONLY*

